

**BIG PLANS?**  
THE RIGHT PARTNER





# Why EASTSHIP?



## Wide range of services

- 1 Project cargo
- 2 Special transports
- 3 Barge operator
- 4 Port operations
- 5 On site logistics
- 6 Marine agency



## Experienced team

Our TEAM has a wide technical specter operational wise ensuring that we have the expertise to handle any operational challenge and deliver effective solutions for your logistics challenges.

- ✓ engineers
- ✓ riggers
- ✓ welders
- ✓ electricians
- ✓ forklift drivers
- ✓ crane operators



## Large fleet

**+25** Trucks  
**+84** Modular axles  
Port cranes  
Lifting equipment



## Great reputation

We can deliver complex solutions, including storage, documentation and clearance thanks to our strong network of partners and suppliers.



## High HSEQ standards





An aerial photograph of a residential street. A large, white, cylindrical object, possibly a pipe or a piece of industrial equipment, is being transported on a yellow trailer. The trailer is being pulled by a white truck. The street is lined with houses of various colors and styles. There are trees and parked cars visible. The scene is captured from a high angle, looking down on the street.

History

# More than just a job

Eastship was founded with a lot of ambition and not much else. What started as a marine agency quickly grew into a freight forwarding company, ultimately becoming a reputable asset based project cargo forwarder.

As the business grew, the importance of building a team with a shared vision for excellence and commitment to customer service became evident. Eastship gathered the best team in the business and continued to expand its capabilities and services.

Today, Eastship is one of the leading heavy transport companies in South East Europe, offering a wide range of services to clients across various industries. Over the years, the company has been involved in significant projects across a range of sectors, including oil and gas, wind energy, power and energy, construction, military, automotive, and many more.



# Fleet

We have invested in a diverse fleet of trucks, semi-trailers, and modular trailers of various shapes and sizes, with a range of accessories to suit any cargo requirement. Our modular trailers offer versatility and flexibility in transporting oversized and heavy cargos, ensuring safe and on-time delivery.

## +25 Trucks



8x4    6x4    6x2    4x2

## Semi trailers

Large variety of semi-trailers available for any project requirements (extendable, dirigible, lowbed)  
A4S8; A4S6; A4S4; A3S4; A3S3; A2S3

## Modular trailers

**84**  
Modular  
axes

A comprehensive portfolio of compatible equipment allows us to transport almost any cargo.

- tower adapters
- dropdecks
- vessel bridges
- turntables
- self propelled modules





# 1 Project cargo

The set-up of Eastship, the experience of our group of colleagues, the equipment and financial strength proved out to result in planning accuracy and flawless execution for multiple projects carried out same time.





# 1 Project cargo

Case study:

## Kostolac power plant

Starting from 2016, Eastship has been a logistics partner for the Kostolac power plant construction project in Serbia.

This project has been a significant undertaking, with multiple challenges along the way, such as navigating complex transportation regulations, coordinating with different parties involved, and ensuring the safety and security of the cargo during transit.

Despite these challenges, our team has coordinated multiple truck loads and barge operations simultaneously, while maximizing port yard space and streamlining the dispatch process.

**700 000** Freight tons

**7 years** duration

**>25 million km** by truck

**>700 000 km** by barge

### Strong points

- ✓ Sufficient staff to attend multiple truck loads and barge operations simultaneously
- ✓ Inside port capacity order to maximize stowage plans and yard layout according to order dispatch
- ✓ Commercially attractive
- ✓ Sufficient trucks and barges to match a tight delivery schedule
- ✓ Long term predictability and reliability
- ✓ Financial strength





# 1

## Project cargo

Case study:

# Rompetro cogeneration plant

Eastship was a key logistic partner for the Rompetrol and KMG Midia cogeneration plant. team was involved in every aspect of the project, from the initial unloading of the cargoes, to arranging for port storage, securing road permits, and ultimately staging the equipment at the final destination

Our commitment to safety and attention to detail ensured that the project was executed flawlessly, and the cargoes were delivered on-time and on-budget.

## Strong points



Long term predictability and reliability



Comercially attractive



Sufficient staff to attend multiple trucks loads and barge operations simultaneously





## 1 Project cargo

Case study:

# Romgaz - Iernut Power plant upgrade

Iernut power plant is the largest Romanian public investment in the last 30 years.

The project, which lasted for 2 years from 2018 to 2020, came with difficult requirements such as crossing tight serpentine of the mountains with 200+ tons of sensitive cargo.

In order to supply the site with materials according to the installation schedule, we came up with creative solutions such as interim storage layout arrangements.

## Strong points

- ✓ Clear feasibility studies
- ✓ Long term predictability and reliability proven by initial budget not being exceeded
- ✓ Technical creativity





## 2 Special transports

The bigger and heavier it gets, the more comfortable we are in competing for the transportation of the cargo. Our team covers all technical and commercial aspects of a potential operation enabling Eastship to be on top of the list when it comes to transport supply of abnormal cargo.





## 2 Special transports

Case study:

# Porto Nogaro reactors transport

We were contracted to pick up 4 heavy reactors from a port in Italy where no suitable heavy lifter can reach. In less than one day we provided the most competitive solution for such a challenging load.

During the tight delivery schedule our team discovered that tide schedules were not matching reality and quickly came up with solutions such as ramp building and increasing the ballast capacity of the barge.

3 x 300 tons

1 x 795 tons

### Strong points

- ✓ Advanced technical knowledge
- ✓ Creative solutions
- ✓ Experience which allowed us to consider all potential issues occurring during execution
- ✓ Comprehensive method statement
- ✓ Good reputation and a strong network of partners that can provide a tonnage on short notice without prior clearing all technical matters





## 2 Special transports

Case study:

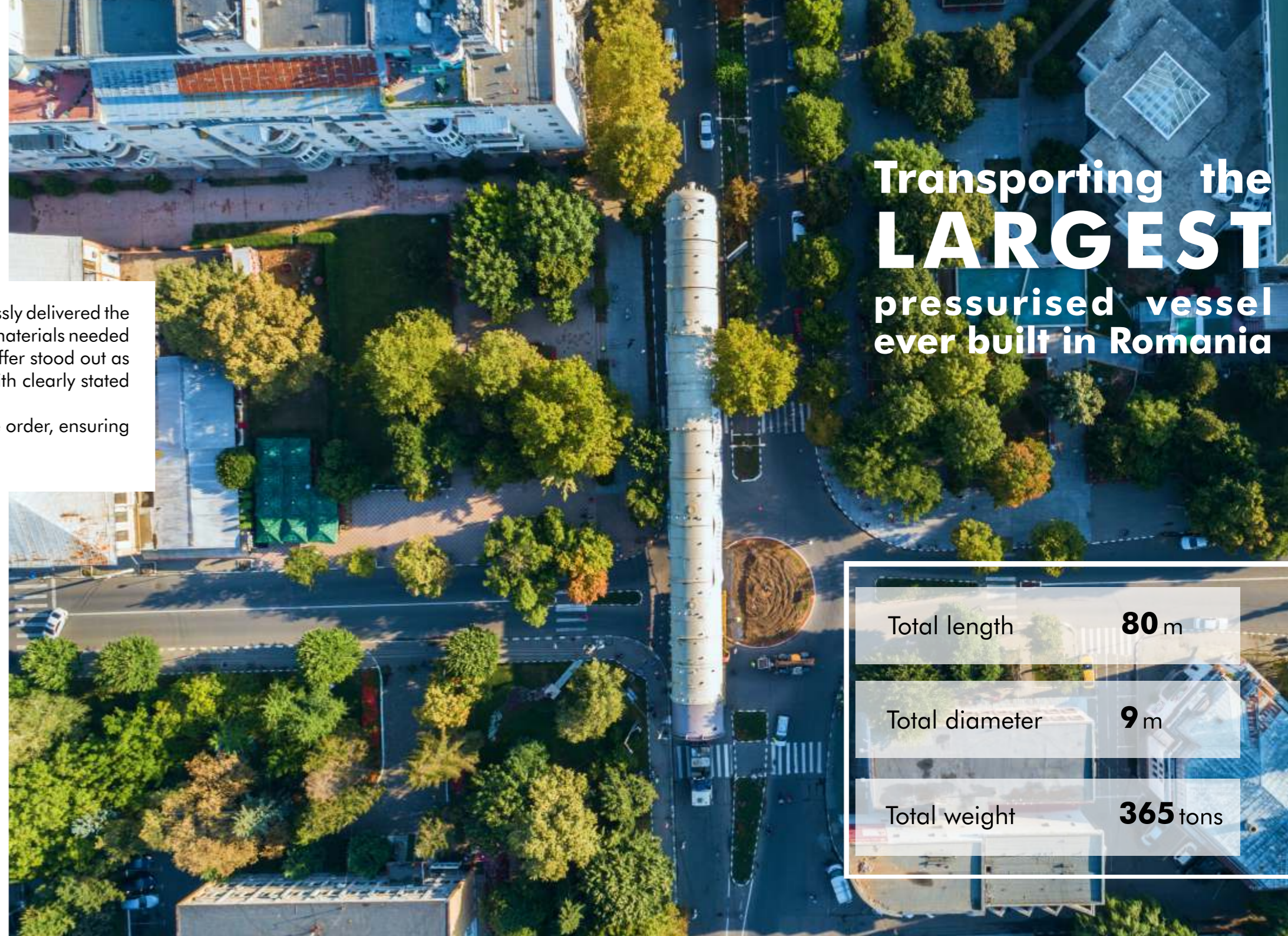
# Midor project

Subcontracted by our long-term partners in Italy, Eastship flawlessly delivered the largest pressurized equipment ever built in Romania as part of the materials needed for the Midor project in Egypt. In a closely contested tender, our offer stood out as the most comprehensive, competitive, and technically feasible, with clearly stated terms through which we demonstrated and assumed responsibility.

Months of careful planning and preparation preceded the order, ensuring every detail was considered and every contingency planned for.

### Strong points

- ✓ Accurate planning and coordination of 30+ suppliers
- ✓ Clear feasibility studies
- ✓ Asset-based trucking service
- ✓ Advanced technical knowledge for truck and barge loading and transport.



Transporting the  
**LARGEST**  
pressurised vessel  
ever built in Romania

Total length **80 m**

Total diameter **9 m**

Total weight **365 tons**



## 2 Special transports

Case study:  
Midor project





## 2 Special transports

Case study:

# LNG tanks

In 2022, Eastship was entrusted with the transportation of two massive tanks to the Vard shipyard in Tulcea. The sheer size of the tanks made it necessary to unload them at Constanta and then transport them by barge to their final destination in Tulcea. However, there was a unique challenge - the dock at Tulcea was higher than any barge that could transport this size of cargo.

This is where Eastship's expertise came into play. Our team devised a creative solution to the problem by stacking two rows of modular trailers on top of each other. This ingenious approach allowed us to unload the tanks safely and securely at the Tulcea dock, and transport them to the shipyard for their installation. This project showcases our staff's technical knowledge and innovative thinking,

### Strong points

- ✓ Advanced technical knowledge
- ✓ Creative solutions
- ✓ Easy access to special barges
- ✓ Comprehensive method statement
- ✓ Complementary services handled by own personnel

Total length **28 m**

Total width **15 m**

Total height **12 m**

Total weight **366 tons**





## 2 Special transports

Case study:  
LNG tanks





## 2 Special transports

Case study:

# HVT transport to nuclear Power plant

In 2022, Eastship was entrusted with the transportation of two high voltage transformers to the Cernavoda nuclear power plant. Given the tight delivery schedule of just three days, our team had to come up with a creative and efficient solution to transport the transformers as quickly and safely as possible. We decided on a combination of barge and truck transportation, with the transformers being transported by barge to Cernavoda and then by truck to the delivery site.

The successful delivery of the transformers required meticulous planning and attention to detail, as well as strict adherence to safety protocols. Our team ensured that every aspect of the delivery, including staging and unloading, was executed with the highest level of precision and care.

### Strong points



High HSEQ standards



Technical creativity



Inside engineering



Asset-based trucking service





# 3 Barge operator

Eastship is regularly involved in the trade to and from countries such

Austria Slovakia Hungary Serbia Bulgaria Russia  
Azerbaijan Kazakhstan Turkmenistan Uzbekistan



Loading



Unloading



Ramp building



Port operations



Lashing





## 3 Barge operations

Case study:

# Jingbo project

Out of the many barge operations we undertake each year, we have decided to highlight this particular one. Despite the transportation of two reactors of this magnitude seeming like a challenge in its own right, the actual difficulty lay in accommodating them onto a relatively small barge. However, through precise execution of a Ro/Ro loading, the Eastship team managed to successfully fit the two reactors with only a few centimeters of leeway.

750 & 550 tons weight

40.5m length

6.6m diameter

### Strong points



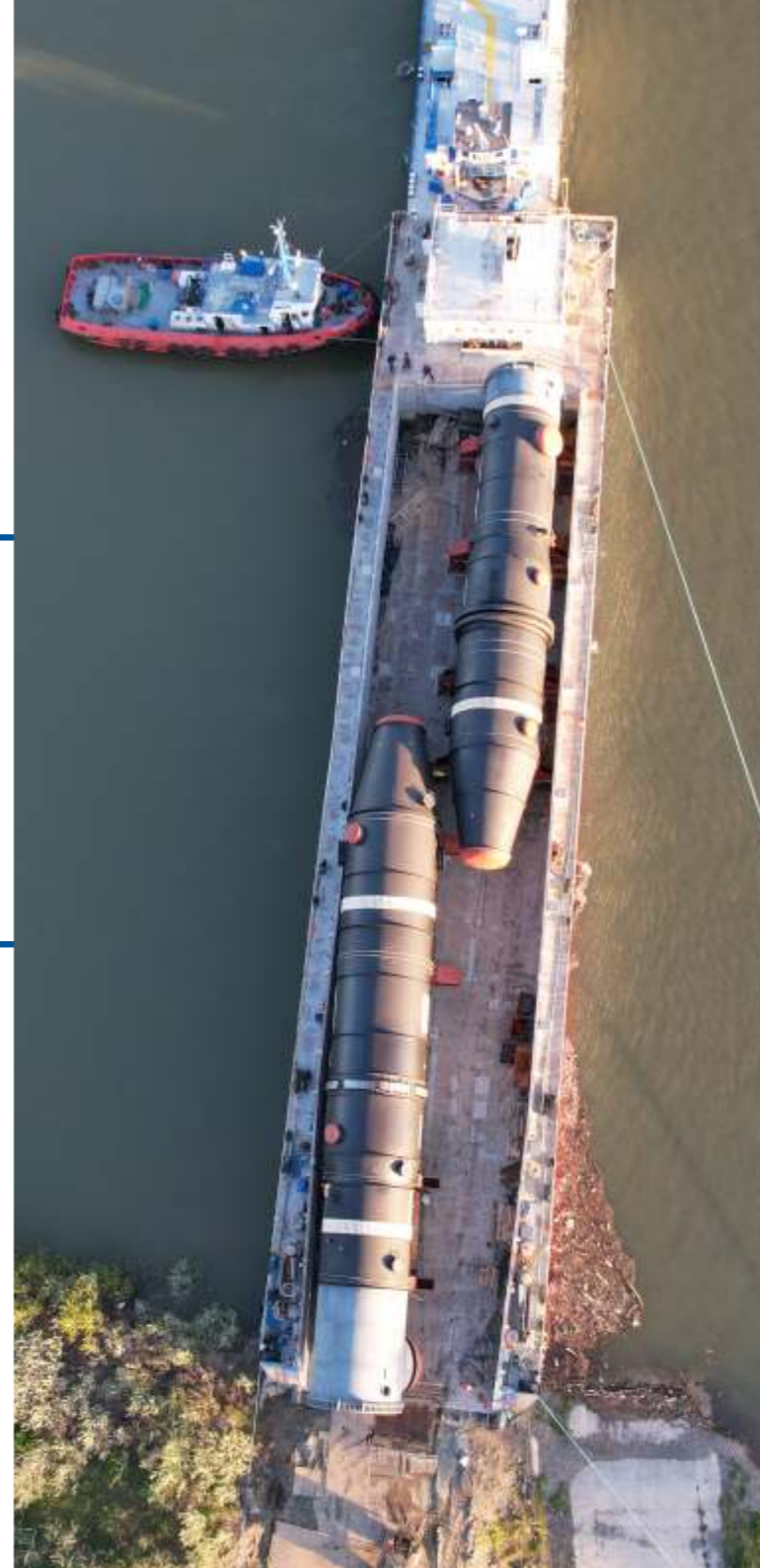
Precise execution



Advanced technical knowledge



Complementary services handled by own personnel





# 4 Port services

We offer to our clients a wide variety of port services, starting from pure forwarding and going as far as complex engineering, such as lifting & lashing plans, lashing services, cargo packing, etc. No matter if it's about project cargo, bulk cargoes, steel or heavy creative solutions matched perfectly into the big picture of clients's needs: technically feasible and competitive pricing.





## Comprehensive solutions

Every project is unique and requires a tailored approach to ensure safe and efficient handling, especially in port operations. That's why we provide detailed calculations and planning for each project we undertake.

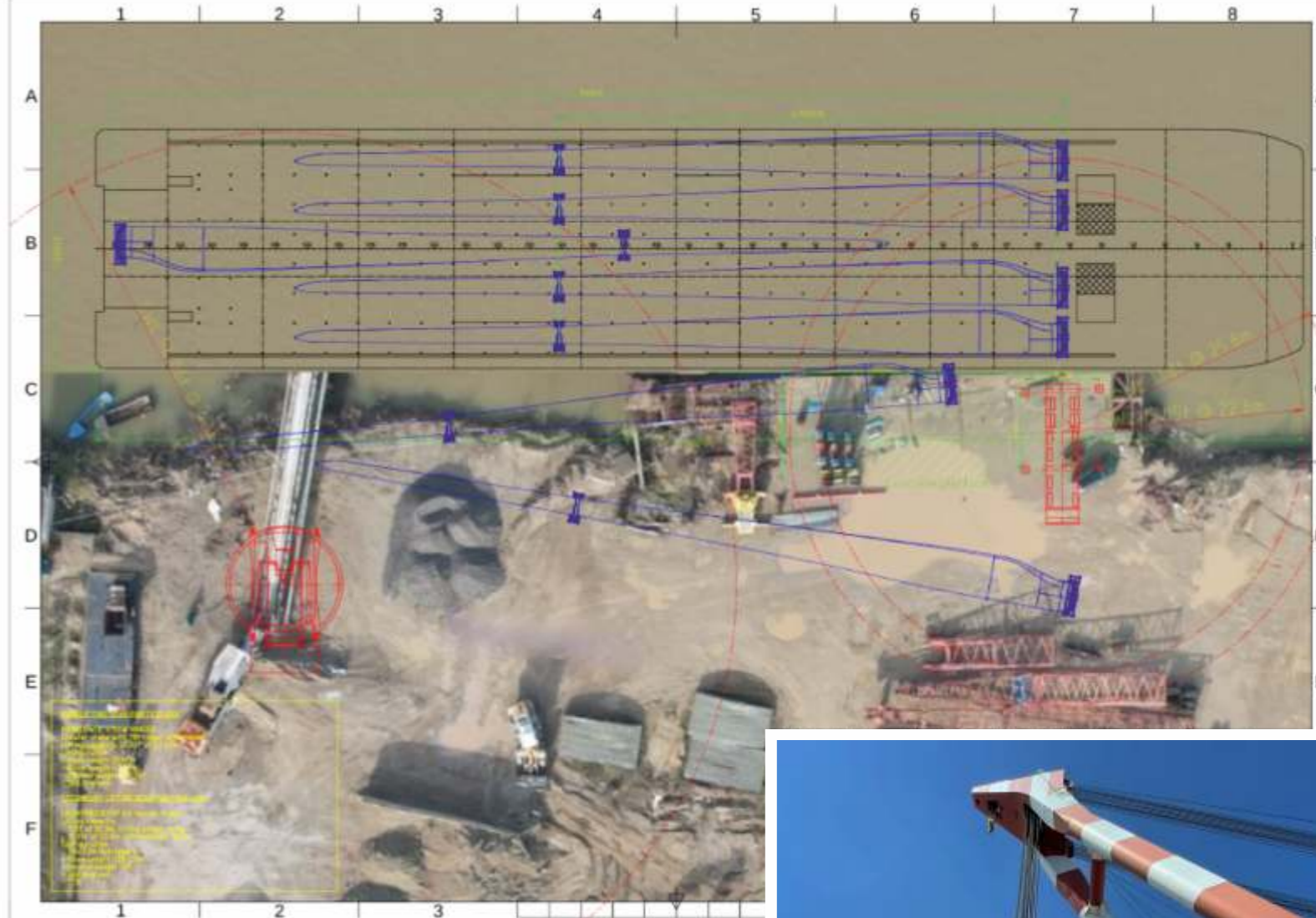
Our experienced team takes into account various factors such as the cargo's dimensions, weight, and characteristics, as well as the vessel's capacity, lifting and rigging equipment, and port infrastructure. Based on these factors, we develop:

- ✓ **stowage and securing plans** that ensure the cargo is positioned and secured properly for transit.
- ✓ **lifting and rigging plans** that outline the sequence of lifts and equipment to be used, including
- ✓ **load calculations** that take into account the cargo's center of gravity and the stability of the lifting equipment.
- ✓ **storage and site layout plans** that ensure the cargo can be efficiently stored on the port and moved to the final destination without any delays or complications.

At Eastship, we don't just stop at planning. We also have the capability to execute the plans ourselves, handling the actual port operations with our skilled team and specialized equipment.

### Strong points

- ✓ Sufficient staff to manage multiple operations simultaneously
- ✓ Inside engineering
- ✓ Experienced staff
- ✓ Fast issuance of lifting & lashing plans
- ✓ Good reputation
- ✓ Large volumes carried out annually





# 5 On site logistics

The Eastship crew has a wide technical specter operational wise, including certified electricians, welders, riggers, forklift drivers, crane operators, engineers and our stock of equipment includes hydraulic jacks, skidding & rolling equipment necessary for positioning / removal to / from foundation different manufacturing equipment.



We can place high or medium voltage transformers on rails without using cranes that can damage the high and medium voltage cables and equipment surrounding.



We can dismantle and position large manufacturing equipment



We can arrange for safe temporary storage





Case study:

# 5972 oil rig relocation

In 2020, Eastship was given the challenging task of moving an onshore rig from one site to another. With a tight deadline of less than 10 days, our team of skilled professionals had to act fast and with precision to ensure a safe and timely move. We dismantled the rig and performed 240 truck loads, completing the task in record time.

One of the advantages of working with Eastship is that our team consists of highly skilled professionals, including engineers, welders, riggers, and certified electricians. With all aspects of the move handled by us, we were able to eliminate the risks involved in having some aspects managed by a third party. Our team's expertise and experience allowed us to coordinate every detail of the move and ensure that everything went smoothly and safely.

### Strong points



Complementary service available easily



Inside engineering



Avoiding risks by handling all aspects





# 6 Marine agency

+150 vessel calls  
per year

## Services

Port Disbursement Account (D/A) checking, validation, and negotiation for local and international customers

Port /customs and immigration clearance

Berthing / un-berthing procedures  
Discharge / loading arrangements and supervision

24/7 monitoring and coordinating all cargo and port operations

Final Disbursement Account (FDA) arrangements

■ Bunker, water, and provisions supply

■ Technical supplies: engine-deck, galley-cabin stores, BA charts etc.

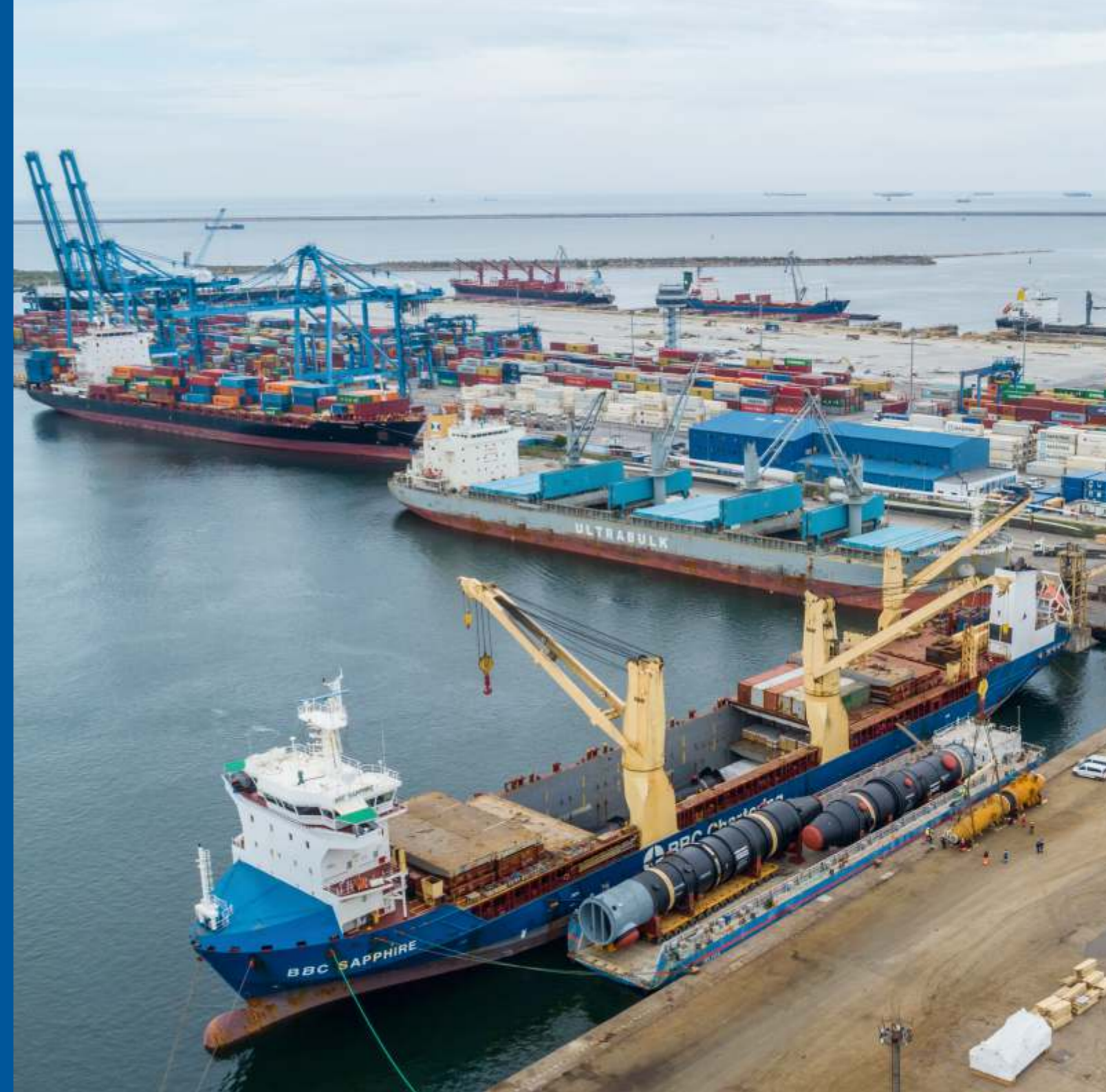
■ Waste and garbage removal

■ Miscellaneous spares

■ Boat hire arrangements for surveyors

■ Firefighting equipment and appliances (portable items)

■ Crew visas, sign on/off, port passes





# Scarabeo 9 and Benguela Gem

Between 2019 and 2021, Eastship provided exceptional marine agency services for two notable projects. Our team successfully supported the offshore Rig Scarabeo 9 of Sapiem during its contract in the Black Sea, and the construction of m/v Benguela gem of DeBeers Marine at the Damen shipyard.

Despite the unique demands of each project, our agency department remained dedicated and committed to delivering consistent, long-term, and exhaustive work. Our efforts were rewarded with positive feedback from our customers, which served as confirmation that we are on the right track and upholding our business values.

## Strong points



Sufficient staff to manage multiple operations simultaneously



Accurate and timely reporting



Financial strength



24/7 monitoring and coordinating all operations



Fast reactions on client`s short notice requests









[www.eastship-projects.com](http://www.eastship-projects.com)

  
[info@eastship-projects.com](mailto:info@eastship-projects.com)

 2nd, Stefan cel Mare St.,  
Impera Tower, 2nd floor,  
900726 Constanta, Romania

 Constanta  
Tel: +40 241 618 490

Cluj-Napoca  
Tel: +40 722 401 970

Bucharest  
Tel: +40 726 724 067