



ALTIUS BOLIVIA



Company Name: Altius S.R-L

1st Contact:

Alfredo Martínez Messuti

amartinez@grupoaltius.com

Cargo: Bolivia Managing Director

Phone contact: +591 710 90 909

2nd Contact:

Salvador Corrales

scorrales@grupoaltius.com

Cargo: Sales director/ Projects Division

Phone contact: +34 610902061

Marketing & Communication Contact - Maria Hornedo -

mhornedo@mdavila.com

Website: www.grupoaltius.com

Business Type:

Altius offers services in a wide range of industries but their especialization is project-oriented, where provides solutions that reduce costs to our clients, always seeking excellence.

Industry of Expertise:

- Oil & Gas
- Energy
- Renewables
- Civil Engineering
- Mining
- Industrial Projects
- Off-Shore
- Civil & Infraestructue

Countries/Continents of expertise:

- Spain, Bolivia, Perú, Chile,
Argentina, USA (Miami)

Number of offices: • 14 offices

Key Accounts:



Services offered:

- Analysis of alternatives and definition of the best logistics solution.
- Vessel selection, loading and ballasting procedures and stowage plans.
- Full design, optimization and fabrication of cargo securing and seafastening.
- Route surveys
- Execution planning, schedules and optimization of times
- Supervision on-site.
- Equipment management.
- Assistance from pre-tender technical teams.
- Real-time and on-site monitoring of project

PROJECT DETAILS: MUTUN - PHASE I - TRANSHIPMENT TO BARGE

Year: 2022

Sector: Industry

Cargo: Engines

Barges: 4 Barges (Mississippi Barges: 2 Rake model and 2 Box model)

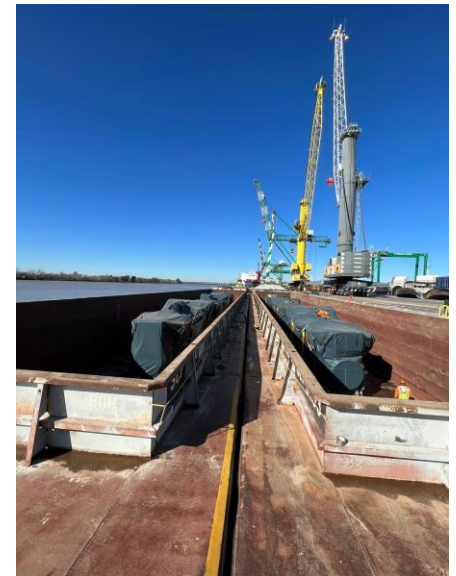
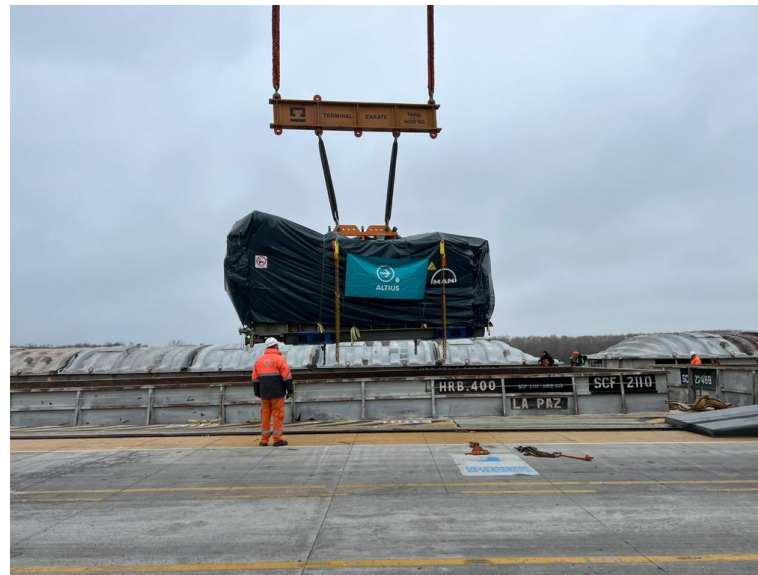
Configuration at barges: 3-3-2-2

Port of Transshipment: Zarate Terminal, Argentina.

Port of destination: Jennefer Port, Bolivia

Final destination: Mutún, Santa Cruz, Bolivia

Scope: Transportation of the engines through the Parana – Paraguay waterway, positioning of 2 cranes of 450 and 500 tons of capacity at Jennefer Port to lifting each engine in tandem, coordination with port and customs authorities for the unloading, mooring of the barges, unlashing of engines and direct unloading onto hydraulic platforms, transport to storage area and selfunloading onto stools.



PROJECT DETAILS: MUTUN - PHASE II – RIVER TRANSPORT AND UNLOADING

Year: 2022

Sector: Industry

Cargo: Engines

Barges: 4 Barges (Mississippi Barges: 2 Rake model and 2 Box model)

Configuration at barges: 3-3-2-2

Port of Transshipment: Zarate Terminal, Argentina.

Port of destination: Jennefer Port, Bolivia

Final destination: Mutún, Santa Cruz, Bolivia

Scope: Transportation of the engines through the Parana – Paraguay waterway, positioning of 2 cranes of 450 and 500 tons of capacity at Jennefer Port to lifting each engine in tandem, coordination with port and customs authorities for the unloading, mooring of the barges, unlashing of engines and direct unloading onto hydraulic platforms, transport to storage area and selfunloading onto stools.



PROJECT DETAILS: MUTUN - PHASE III – ROAD TRANSPORT

Year: 2022

Sector: Industry

Cargo: Engines

Modules: 5 Hydraulic modules of 10 and 12 lines.

Origin: Jennefer Port, Santa Cruz, Bolivia

Destination: Mutún, Santa Cruz, Bolivia

Scope: Conditioning of the storage zone with the stools, transportation of the engines to the storage zone, unloading the engines onto stools, road conditioning including terracing of difficult areas and pruning of trees (80% of the road is unpaved) , transportation of the engines from berth and storage zones at Jennefer Port to Mutun plant, located 35 km away.



PROJECT DETAILS: NURC PROJECT

- Sector:** Petrochemicals
- Cargo:** Reactors and Columns
- Volume:** 42 pcs / 4.275 CBM / 220 Tons
- Origin:** Masan, Korea
- Destination:** Cochabamba, Bolivia
- Scope:** Logistics from port of origin (Arica) to construction site.



NURC PROJECT - BORDER LIMIT CHILE BOLIVIA



PROJECT DETAILS: NUIS PROJECT

- Sector:** Petrochemical
- Cargo:** Reactors + Columns
- Volume:** 8 pcs / 1725,03cbm / 211 tons
- Origin:** Masan, Korea
- Destination:** Santa Cruz, Bolivia
- Scope:** Transportation from port of discharge in Arica to construction site.

HIGHLIGHTS

Columns up to 32 meters long, road improvement works along the way from Africa to Tambo Quemado.





PROJECT DETAILS: GRAN CHACO

- Sector:** Oil & Gas
- Origin:** Spain, Italy and Belgium
- Destination:** Yacuiba (Bolivia)
- Cargo:** Columns, modules and tanks
- Max. Load:** 250 tons
- Volume:** 86un – 26.949cbm - 4.670tons
- Scope:** Transportation from origin to port of discharge (Zarate, Argentina) and road transport to construction site.

HIGHLIGHTS:

- Units were 42 meters long, 7.2 meters in diameter and they weighed up to 250 Tons.
- Coordination with various electric co-ops, removal of obstacles, civil works, topographic squads, toll bypass construction, etc.





PROJECT DETAILS: POTOSI CEMENT PLANT

- Sector:** Infrastructure
- Origin:** Arica
- Destination:** Potosi (Bolivia)
- Cargo:** Modules, structures, viroles, etc
- Volume:** 3.850 ton, 20.500 cbm, 700 TEUS
- Scope:** Ocean Freight (FCL), unloading at Arica, Land transport to jobsite ansport to construction site.



PROJECT DETAILS: VIACHA CEMENT PLANT EXPANSION

- **Sector:** Infraestructure
- **Cargo:** Rotor, mill table and spare parts
- **Max. Load:** 92 tons
- **Volume:** 3500 FRT
- **Origin:** Italy, Germany, Houston, China,...
- **Destination:** Viacha, La Paz, Bolivia
- **Scope:** Logistics from origin to final destination.



PROJECT DETAILS: VIRU VIRU AIRPORT

- **Sector:** Airport (infrastructure)
- **Carga:** Passenger Boarding Bridge
- **Máx. Carga:** 30 TONS
- **Volume:** 1.000 FRT
- **Origen:** Spain
- **Destino:** VIRU VIRU, SANTA CRUZ, BOLIVIA
- **Alcance:** Land Transportation at origin, port charges (POL and POD), Sea Transportation and delivery from POD (Chile) up to final site (Bolivia).



OTHER AIRPORT PROJECTS

EXTENSION AIRPORT PROJECT “EL ALTO”

PROJECT DETAILS:

- **Sector:** Airport
- **Cargo:** Tunnel walkways
- **Volume:** 15 pcs / 36 tons / 393,04 CBM
- **Origin:** Bilbao, Spain.
- **Destination:** La Paz, Bolivia.
- **Scope:** Land and sea transportation from Thyssenkrupp Airport Systems facilities (Spain) to final destination (Bolivia).

EXTENSION AIRPORT PROJECT “JORGE WILSTERMANN”

PROJECT DETAILS:

- **Sector:** Airport
- **Cargo:** Tunnel walkways
- **Volume:** 18 pcs / 42,5 tons / 511,14 CBM
- **Origin:** Bilbao, Spain.
- **Destination:** Cochabamba, Bolivia.
- **Scope:** Land and sea transportation from Thyssenkrupp Airport Systems facilities (Spain) to final destination (Bolivia).



PROJECT DETAILS: MISICUNI HYDROELECTRIC POWER PLANT

- **Sector:** Infraestructure
- **Cargo:** Rotor and Stator
- **Max. Load:** 77 tons
- **Volume:** 160 CBM
- **Origin:** Bilbao (Spain)
- **Destination:** Cochabamba (Bolivia)
- **Scope:** Logistics from origin (Bilbao) to final destination (Bolivia).

